

POUNDBURY SECTOR 2.25 BUILDING 7

POUNDBURY, DORCHESTER

Brought to you
exclusively by
Connells Estate Agents

Connells



BUILDING SEVEN

BUILDING 7 - FLAT 3 (DUPLEX) SECTOR 2.25

FLAT 3 (SECOND & THIRD FLOORS)

SECURE COMMUNAL ENTRANCE
LIFT SERVICE
ALLOCATED CAR PARKING SPACE
SECOND FLOOR

ENTRANCE HALL
CLOAKROOM

MASTER BEDROOM C.5.5M X 3.1M (18' X 10'1")
EN-SUITE SHOWER ROOM

BEDROOM 2 C.3.6M X 3M (11'8" X 9'8")

BATHROOM
BEDROOM 3 C.3.1M X 3.1M (10'1" X 10'1")

THIRD FLOOR

LANDING
CLOAKROOM 2

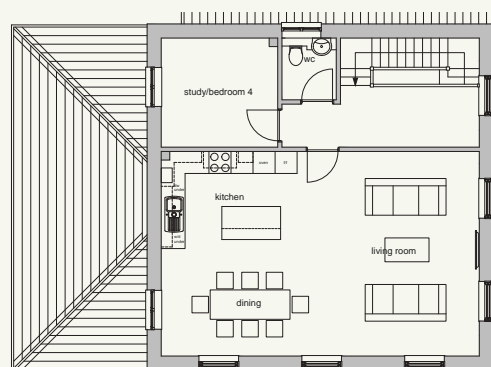
STUDY/BEDROOM 4 C.3.1M X 3M (10'1" X 9'8")
OPEN PLAN LIVING ROOM, DINING AREA &
KITCHEN C.8.6M X 5.5M (28'2" X 18')

MORRISH BUILDERS
— THE HERITAGE BUILDING COMPANY —

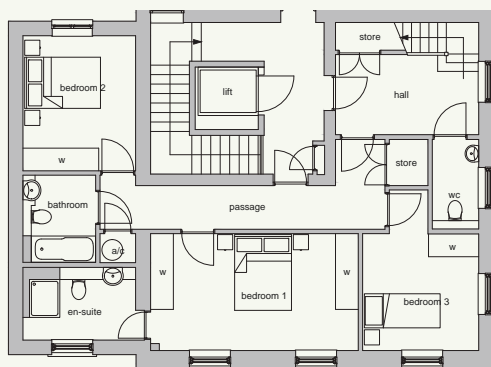


BUILDING 7 - FLAT 3 (DUPLEX) FLOOR PLANS

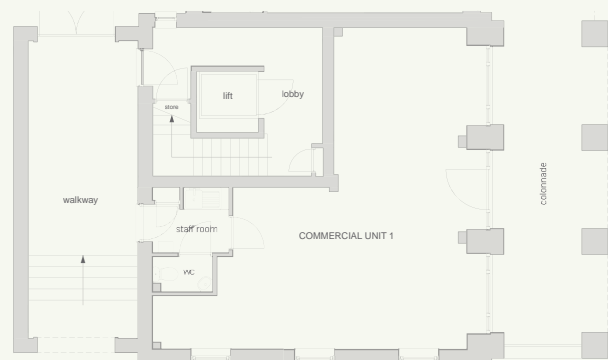
THIRD FLOOR (FLAT 3)



SECOND FLOOR (FLAT 3)



GROUND FLOOR (COMMERCIAL UNIT)



Call us today on **01305 213745**

www.morrish-builders.co.uk